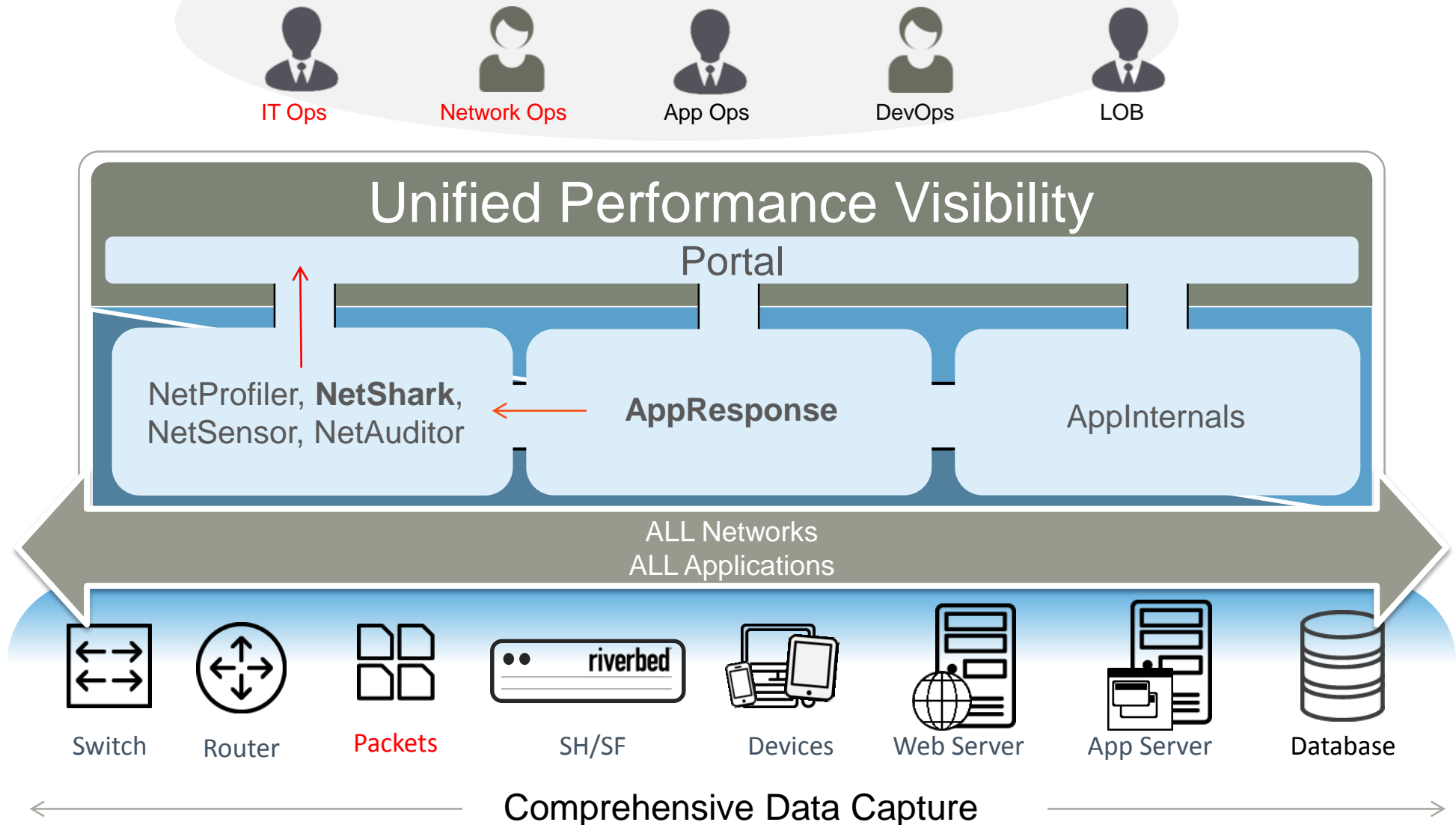




SteelCentral Packet Capture & Analysis

riverbed[®]

SteelCentral Platform



SteelCentral: Your Command Center for Application Performance



SteelCentral
NetShark

SteelCentral NetShark

Continuous High-Speed Packet Capture

- Continuous packet capture and storage for retrospective analysis of network, security and app issues
- Smart packet indexing for high query performance and low network overhead
- Mix 1GbE & 10GbE interfaces on same appliance
- Unique multiple concurrent capture jobs
- DPI – distinguish between business & recreational apps (1300+ apps)
- Available as appliance or virtual software
 - Integrated into SteelHead and SteelFusion

Types of NetShark



SteelCentral NetShark appliance



SteelCentral NetShark Virtual Edition



SteelCentral NetShark for SteelHead EX



SteelCentral NetShark Virtual for SteelFusion

NetShark Appliances

High-speed packet capture & storage appliances

Description	Form Factor	Total Packet Storage
NetShark 2170	1U	8 TB
NetShark 4170	2U	32 TB
NetShark 6170*	2U	576TB
NetShark Storage Unit 48TB	2U	48 TB
NetShark Storage Unit 72TB	2U	72 TB

NetShark 6170

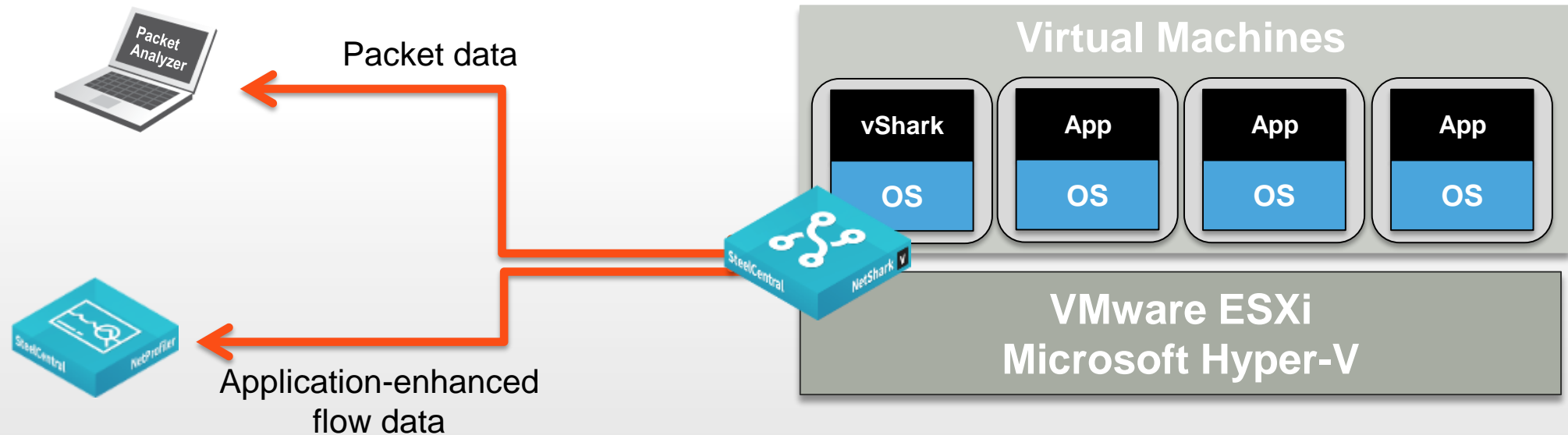


Storage Unit 6170



* Storage Unit required with NetShark 6170. Up to 8 Storage Units can be used.

NetShark-V: Visibility into Virtual Environments



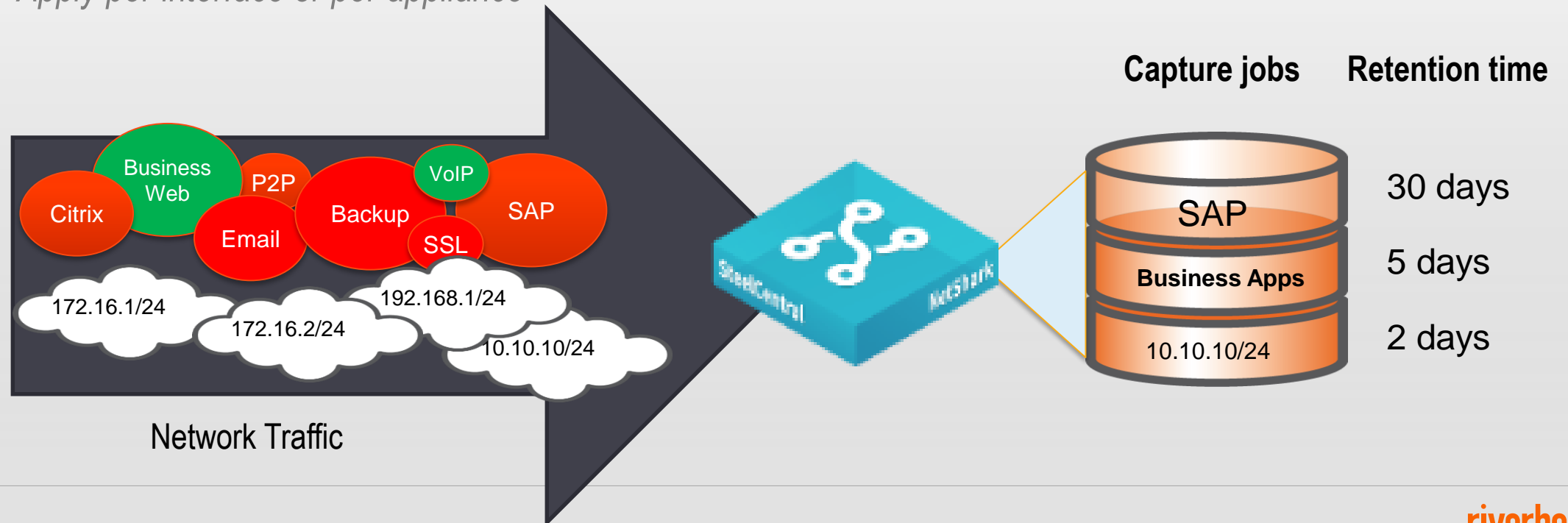
- Real-time visibility into virtualized and cloud environments
 - Software version of NetShark continuous packet capture appliance
 - Monitors all inter-VM traffic crossing VMware vSphere or Microsoft Hyper-V virtual switch
- **Simultaneous** packet capture and flow export
 - Continuous packet capture for back-in-time analysis via Packet Analyzer
 - Store packets locally or on SAN
 - Works with NetProfiler to provide unified visibility across physical & virtual network
- Available in 3 models: 50GB, 1TB or 2TB

SteelCentral NetShark

Multiple concurrent capture jobs

Run multiple concurrent capture jobs

- Configure different data retention and wrap policies per capture job
- Apply different filters (standard Wireshark capture filters) or packet slicing per job
- Apply per interface or per appliance



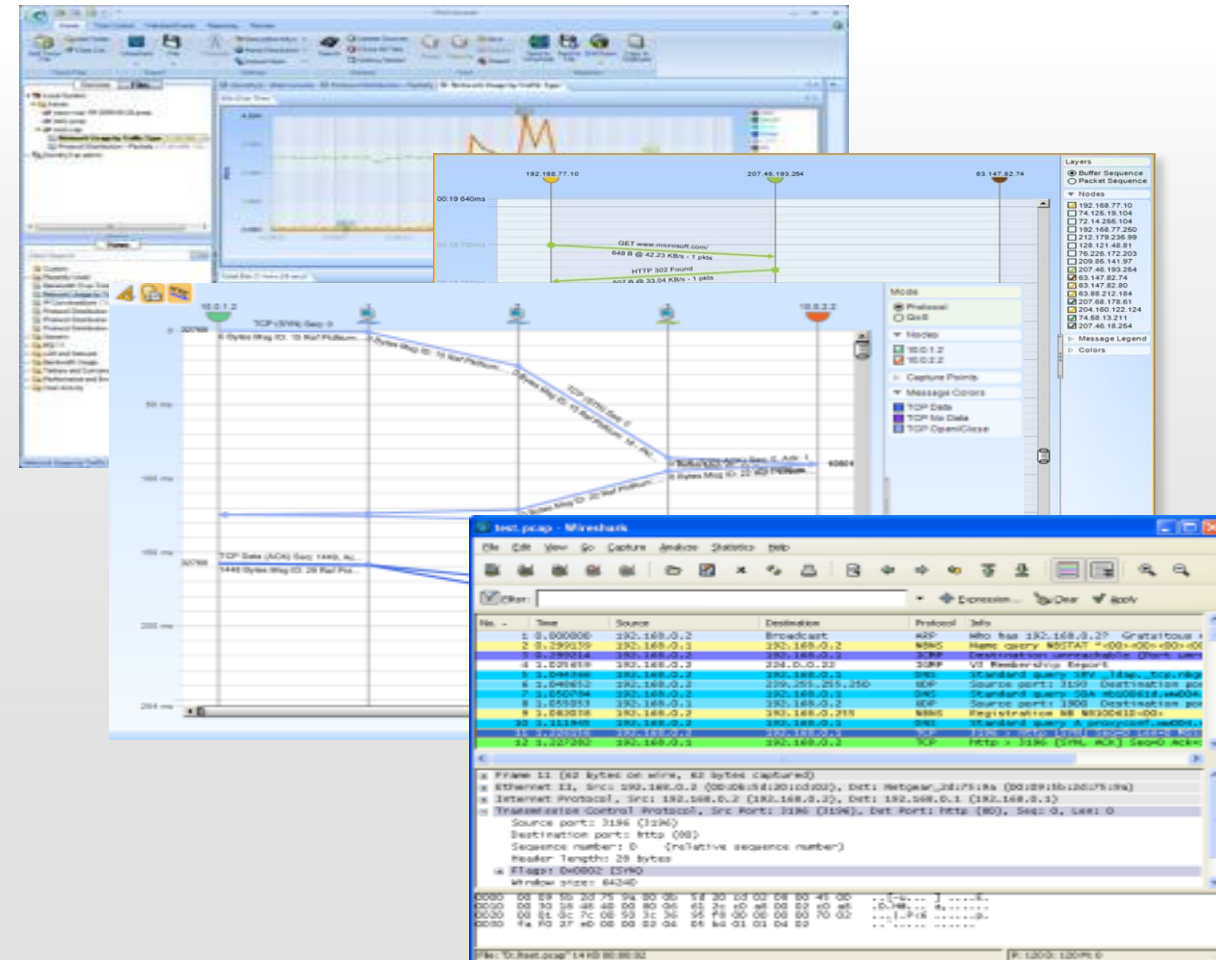


SteelCentral Packet Analyzer

SteelCentral Packet Analyzer

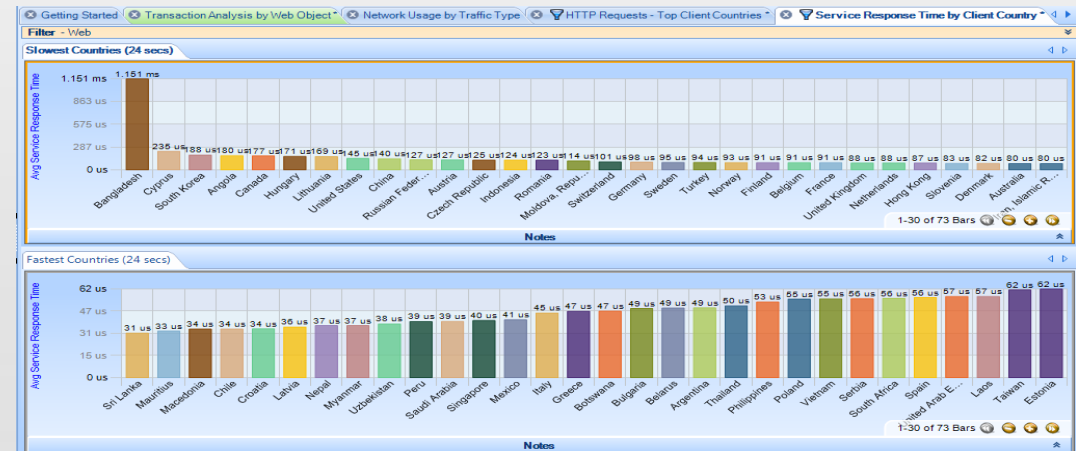
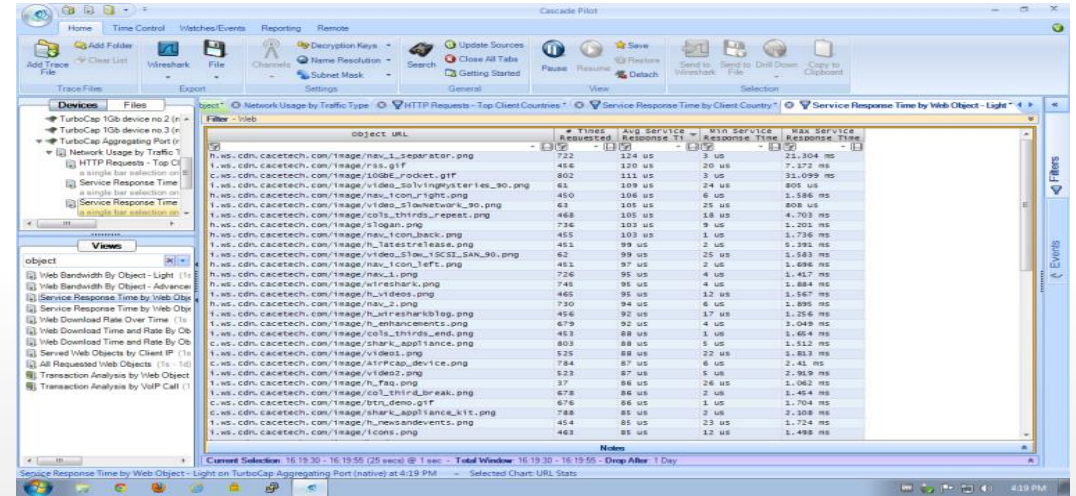
Powerful, visually rich packet analysis software for NetShark

- Intuitive, visual interface with broad selection of interactive Views
- Packet, transaction and multi-segment analysis in a single solution
- *Quickly* open and analyze multi-terabyte trace files
- Seamlessly integrates with Wireshark – world’s most popular protocol analyzer
- Integrates with Transaction Analyzer for transaction analysis and “what if” predictions

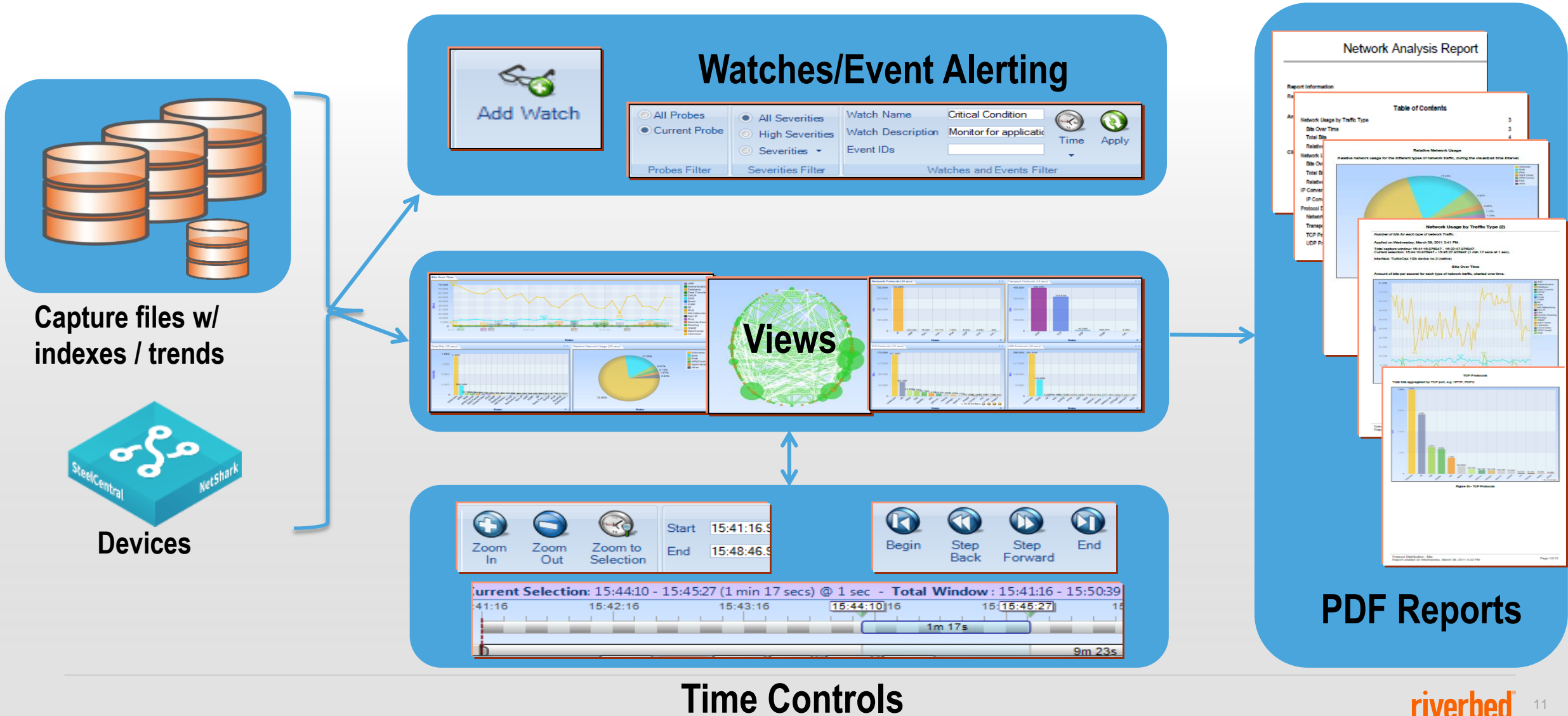


Broad Selection of Views

- LAN/WAN troubleshooting
 - MAC, VLAN, ARP, ICMP, DHCP, and DNS
- Bandwidth usage
 - MicroBursts, IP, TCP, Web, FIX and VoIP
- Talkers and conversations
 - IP, subnets, countries, TCP, Web, and VoIP, FIX
- Performance and errors
 - IP, TCP, Web, VoIP, FIX
- User activity
 - Web, VoIP, FIX
- 802.11 WLAN troubleshooting
 - Discovery, Bandwidth, Channel Usage, Retransmissions, Signal, Noise



Packet Analyzer Architecture Summary



Fast Troubleshooting

SteelCentral NetShark & Packet Analyzer

• Data is always available

- Facilitate “back-in-time” analysis of network, security and application issues

• Fast problem resolution

- Accelerate identification and troubleshooting of complex problems
- Minimizes downtime and user impact

• Improve IT service responsiveness

- Quickly respond to customer trouble tickets
- Enhance IT productivity by having the right information at your fingertips



Thank You

Comparing NetShark and AppResponse

With NetShark/Packet Analyzer, the user is engaged in applying analysis views on-demand



NetShark Strengths

- Analyze multi-TB traces fast without transferring files
- Live and historical packet analysis – local or via distributed, remote NetSharks
- Real-time microsecond alerting and microburst views for fine-grained analysis
- On-demand drag-and-drop, multi-level drill-down analysis
- Leverage SteelHeads for packet capture
- Leverage SteelHeads for optimization, QoS and response time analysis, DPI and path selection monitoring
- Full integration with Wireshark

With an AppResponse, the appliance does this automatically



AppResponse Strengths

- Automated, continuous analysis of real end-user traffic
- Identify and isolate anomalies
- Response time breakdown into contributing sources
- Web transaction response time at the page level
- Correlate Citrix front-end user session to back-end applications
- Database performance at transaction level
- Leverage SteelHeads for EUE monitoring of optimized web and SaaS apps

While both appliances offer packet analysis, each is popular for different reasons